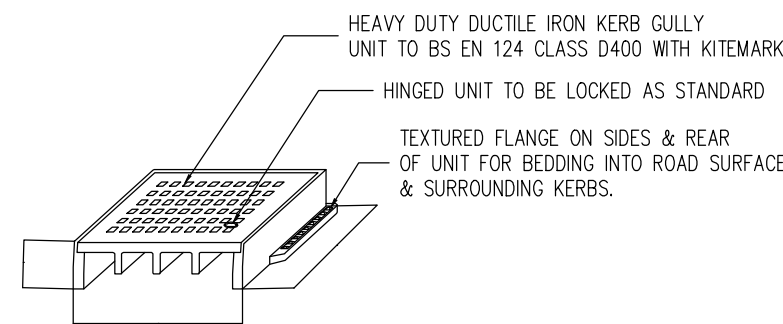
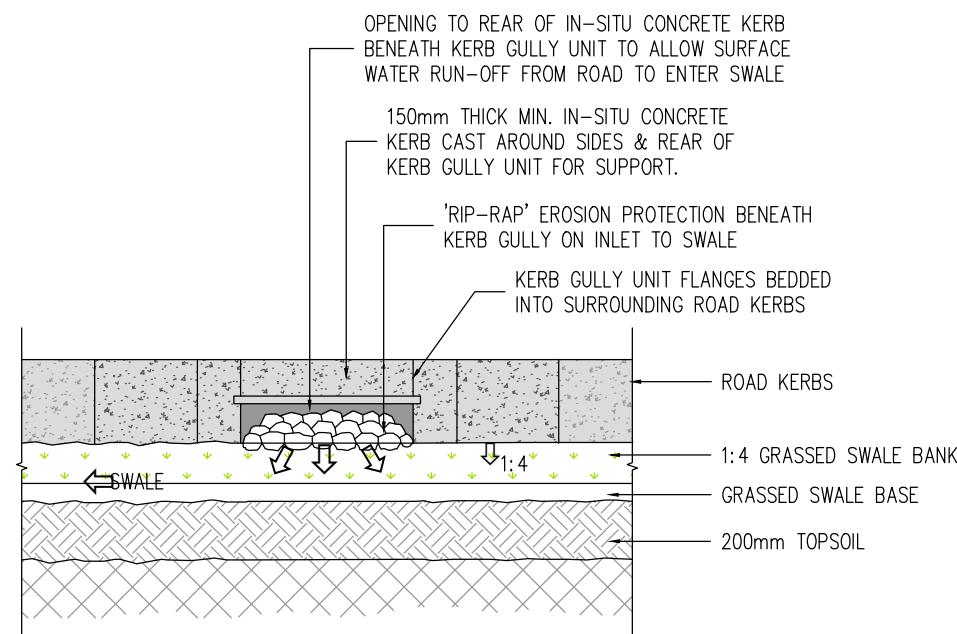


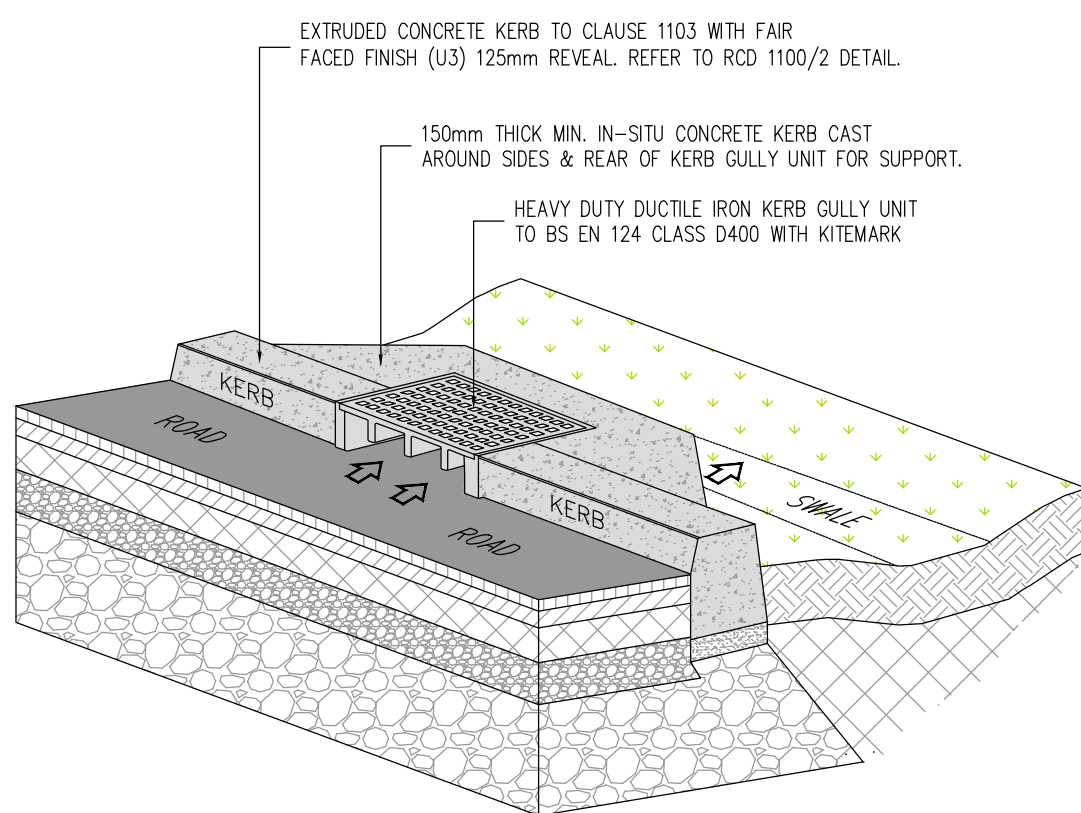
LATERAL INLET KERB GULLY-PLAN.
(FOR ROAD DRAINAGE).
SCALE= N.T.S.



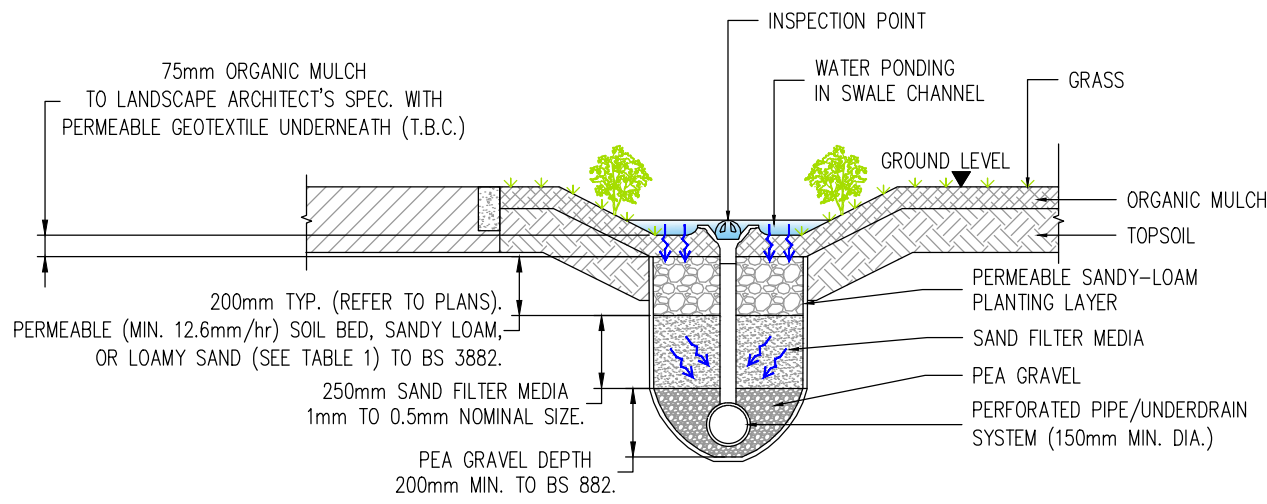
LATERAL INLET KERB GULLY DETAIL.
(LOCATED ALONG KERBLINES TO ALLOW ROAD SURFACE WATER RUN-OFF INTO SWALES).
SCALE= N.T.S.



LATERAL INLET KERB GULLY TO SWALE-REAR ELEVATION.
(FOR ROAD DRAINAGE).
SCALE= N.T.S.

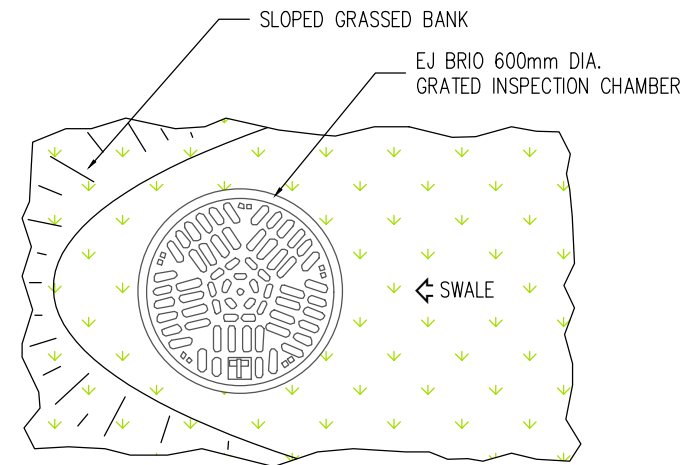


LATERAL INLET KERB GULLY SCHEMATIC.
(FOR ROAD DRAINAGE).
SCALE= N.T.S.

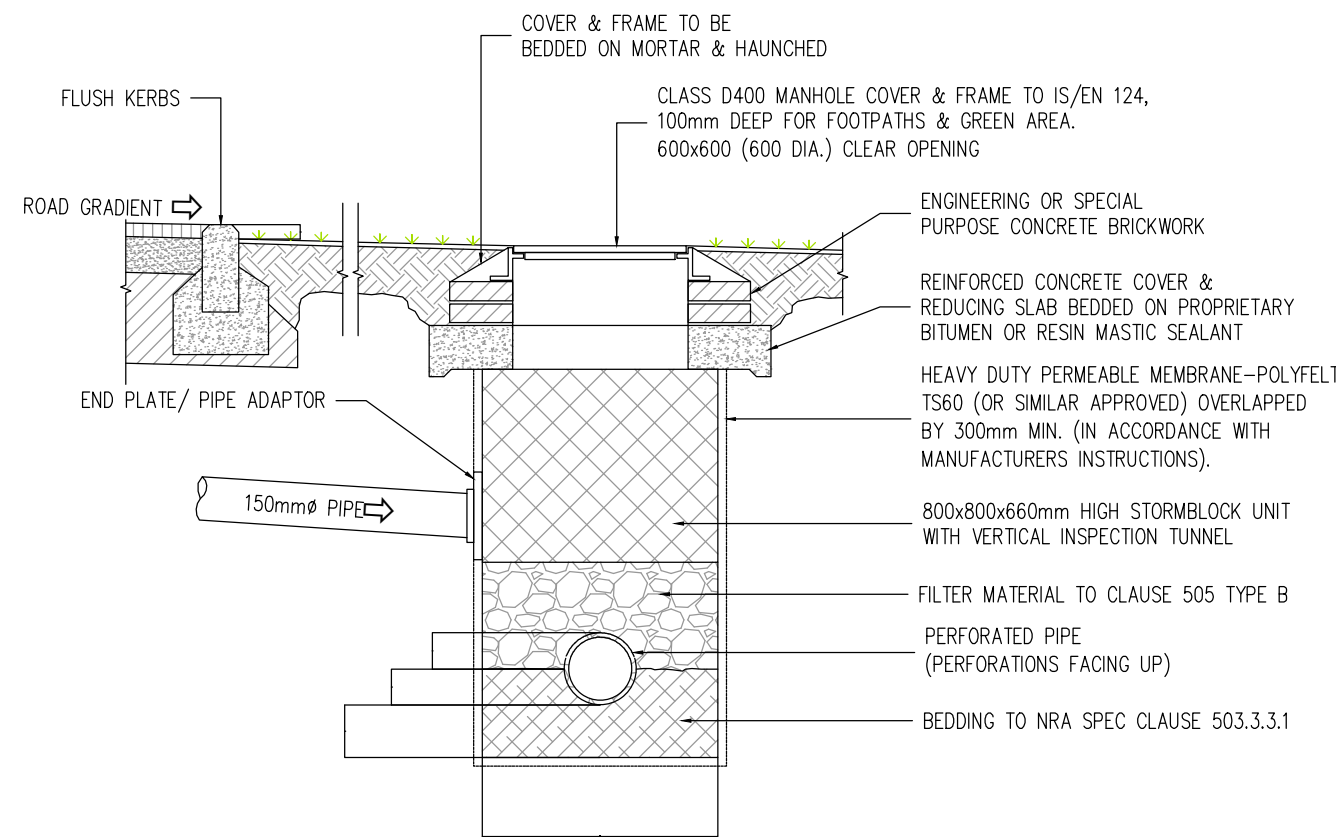


BIO-RETENTION SWALE.
SCALE= N.T.S.

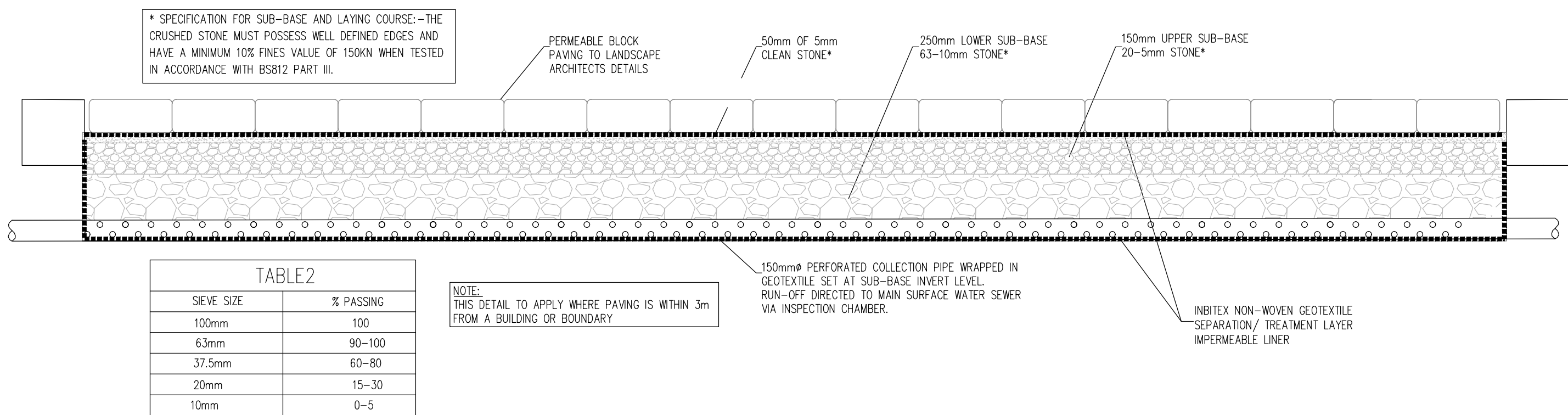
TABLE1	
COMPONENT	PERCENTAGE MIXTURE
SAND	35-60%
SILT	30-50%
CLAY	10-25%
ORGANIC MATTER	0-4%
TOP SOIL	-



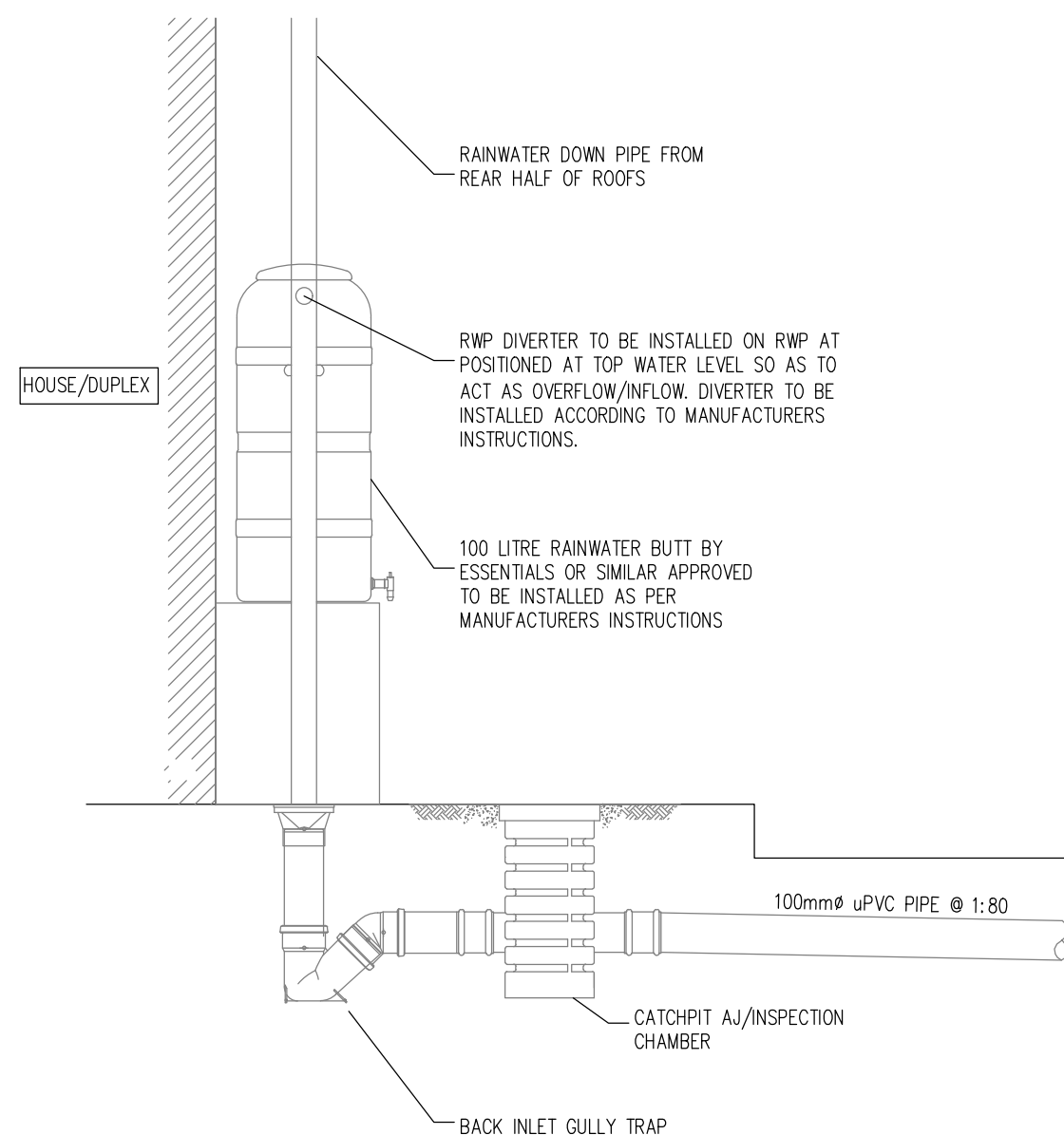
PLAN.
SCALE= N.T.S.



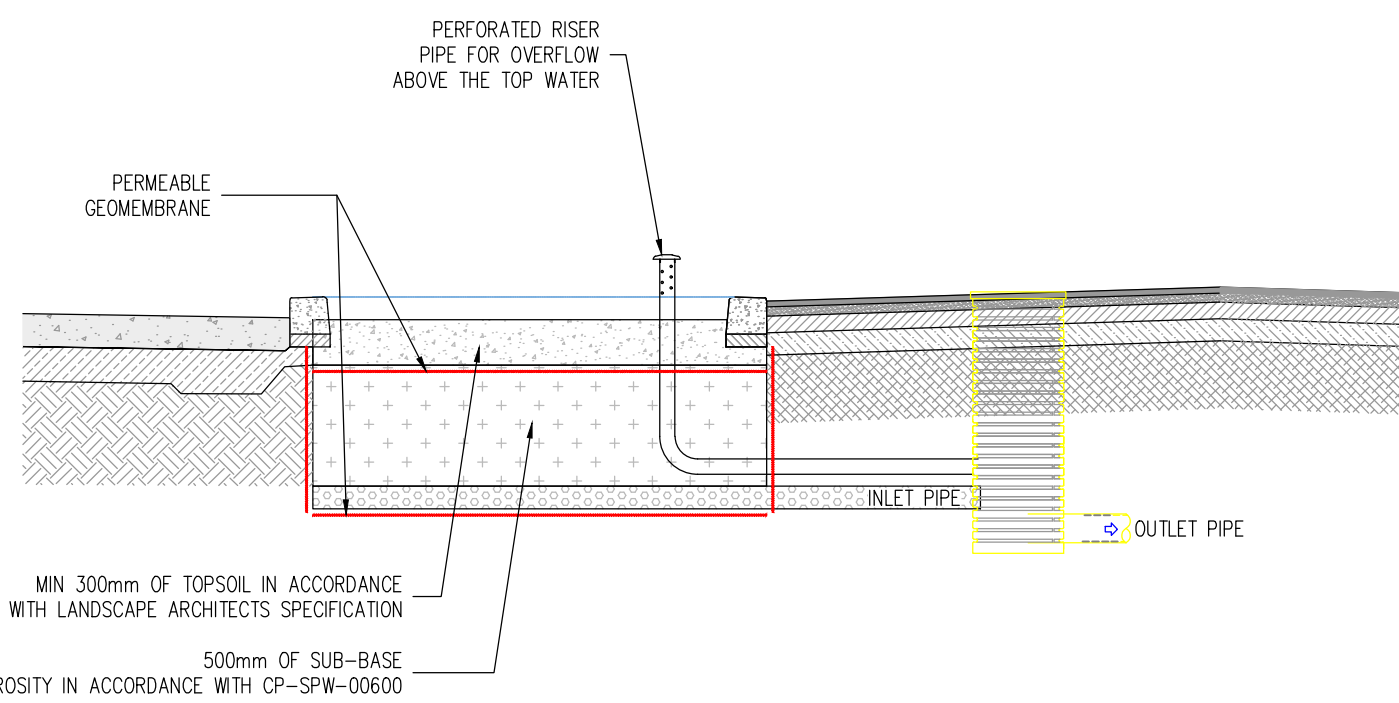
GULLY CONNECTION TO FILTER DRAIN.
SCALE= N.T.S.



PERMEABLE PAVING SECTION (FILTRATION ONLY) (PRIVATE DRIVEWAYS)
SCALE 1:20



RAINWATER BUTT DETAIL (REAR OF HOUSE/UNITS)
SCALE 1:20



TYPICAL RAINGARDEN DETAIL
SCALE 1:50

PLANNING DRAWING.
NOT FOR CONSTRUCTION.
ALL LEVELS GIVEN ARE
RELATIVE TO ORDNANCE DATUM.
THIS DRAWING HAS BEEN ISSUED FOR INFORMATION
PURPOSES ONLY AND MUST NOT BE USED
FOR CONSTRUCTION UNDER ANY CIRCUMSTANCES

- NOTES**
- For setting out refer to Architect's drawings.
 - This drawing to be read in conjunction with all other Architectural and Engineering drawings and all other relevant drawings and Specifications.
 - DO NOT SCALE THIS DRAWING. Use figured dimensions only.
 - No part of this document may be reproduced or transmitted in any form or stored in any retrieval system of any nature without the written permission as copyright holder except as agreed for use on the project for which the document was originally issued.
 - Ordnance Survey Ireland Licence Number EN 0074025

Rev No	Date	REVISION NOTE	Drn By	Chkd By
P1	31.01.2025	LRD PLANNING ISSUE	AB	QL

Architect	CCK ARCHITECTS			
Project	Development at Former Teagasc Lands Kinsealy, Co. Dublin			
Title	Proposed SuDS Details Sheet 2 of 2			
Dwg. No.	C215-CSC-00-XX-DR-0022			
Date	Drn by	Chkd by	Aprvd by	Scale
Sep' 2024	AB	GL	OS	As Shown @A1
Revision				P1

CS Consulting Group	
DUBLIN LONDON LIMERICK	
Head Office 19-22 Dame Street, Dublin 2 T: +353 (0)1 5480863 e: info@csconsulting.ie w: www.csconsulting.ie	
Quality Environment Energy Health & Safety	NSAI Certified
I.S. EN ISO 9001:2008 I.S. EN ISO 14001:2004 I.S. EN ISO 50001:2011 OHSAS 18001:2007	